

DIGIEYE COMPACT

Quick setup

V1.5 09-2016

1. List of components



1 Digieye unit



1 AC 110-230V –
DC 12V 5A
Adapter



1 Power
supply
cable



Documentation
Warranty



2 CDROM:
CD1: Manuals
+ Software PC
CD2: Digieye
installation



1 video-mux
BNC cable (8
ch)



1 terminal block
9-pin (I/O)

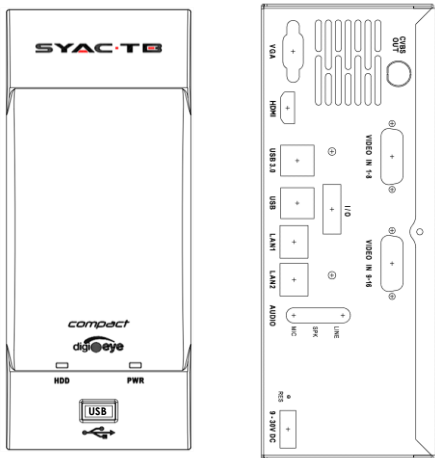


1 USB
mouse

2 video-mux
BNC cable (16
ch)

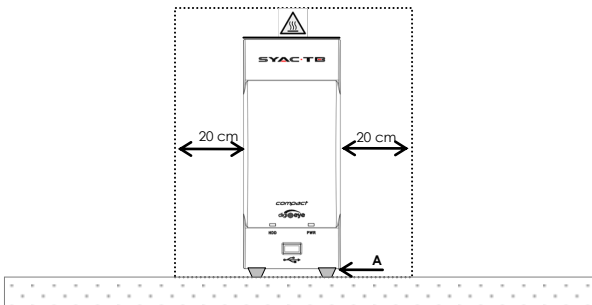
Not included
with NVR.

2. System description





HDD	Hard disk status LED	LAN1	Primary network port RJ45
PWR	Power supply status	LAN2	Secondary network port RJ45
VGA	VGA video output	AUDIO	Mic/Line=inputs, Spk=output
HDMI	HDMI video output	VIDEO IN	Video inputs BNC (CVBS)
CVBS	CVBS video output (optional)	I/O	Alarm input / relay output
USB	USB 2.0 ports (1 front, 2 rear)	RES	Software reset button (only in case of emergency)
USB 3.0	2 USB 3.0 ports (blue)	DC	Power connection 9-30Vdc (60W)

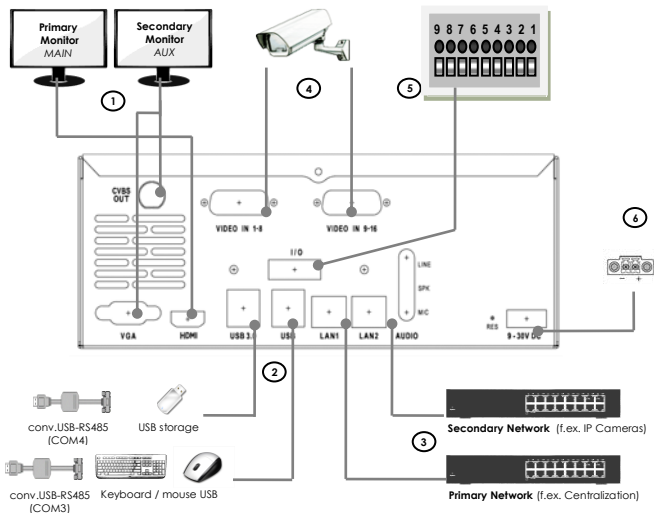
3. Positioning



- Place the unit upright, on a stable and solid surface, making sure that the 4 spacers supplied (**A**) are well placed in the base.
- Check that the slots in the chassis are not obstructed. Leave the top surface free and keep a free distance of at least 20 cm all around the unit.
- Do not place the unit near sources of heat or closet or other electronic devices while operating.
- For optimal operation, keep the room temperature below 35°C.

	CAUTION HIGH TEMPERATURE OF METALLIC CASE	
<p>The unit is provided with a passive cooling system (fanless), which transfers the heat on the metal walls of the chassis, which therefore may be very hot (up to 60°C).</p> <p>It is recommended to turn off the system and let it cool at least 15 minutes before handling.</p>		

4. Installation



1. Primary Monitor (MAIN) / Secondary (AUX)

DigiEye is able to control up to 2 video monitor outputs simultaneously.

Monitor	Function
Primary (main)	Configuration/Maintenance, Video Monitoring and alarms
Aux (secondary)	Video display live/playback (multi-split)

The unit is provided with 1 digital HDMI video output, 1 VGA analog video output and optionally 1 CVBS output. Optional video adapters are available to connect different types of monitor interfaces using video adapters.

Refer to the below chart to configure the connections, depending on the number of monitors to be connected to the DigiEye:

Configuration	Interface	Monitor 1	Monitor 2
A. 1 monitor (VGA)	VGA	Main/Aux ⁽¹⁾	---
B. 1 monitor (HDMI)	HDMI	Main	---
C. 1 monitor (CVBS)	CVBS		Aux ⁽¹⁾
D. 2 monitors ⁽²⁾ (HDMI+VGA)	HDMI	Main	
	VGA		Aux
E. 2 monitor ⁽²⁾ (HDMI+CVBS)	HDMI	Main	
	CVBS		Aux
⁽¹⁾ It's possible to force Aux in the system reinitialization program ⁽²⁾ The monitors must be connected and switched on BEFORE powering up DigiEye. If DigiEye restarts and does not find the connected monitor (eg. The monitor is turned off) this will not be detected by DigiEye, consequently disabling the Main / Aux output. You will need to restart the DigiEye system to detect the monitor.			

DigiEye automatically detects the monitors connected to the system at boot and sets the MAIN/AUX video interfaces resolution to optimal values.

We recommend to use monitors with the following technical characteristics:

Type of DigiEye	Optimal video resolution	A/R
DVR	1024 x 768	4:3
	1280 x 1024	5:4
	1600 x 1200	4:3
HVR / NVR	1440 x 900	16:10
	1920 x 1080 (Full-HD o 1080p) (*)	16:9
(*) The new DigiEye user interface (dark gray) is enabled only when a Full-HD primary (MAIN) monitor is being used (resolution 1920x1080).		

If no monitor is connected to the system at boot, it will activate the MAIN or AUX interface anyway (depending on the configuration) that will be displayed once a monitor will be connected on one of video interfaces.

When you change a monitor or a video port, we suggest to reboot the system (shutdown/restart).

2. Connection of USB devices

Connect the USB devices using the below chart:

USB ports	Supported Devices
USB (1 on the front and 2 on the rear, white)	USB Mouse/Keyboard
	USB Storage (backup)
	CONV.USB-485 (opt.) – COM3
USB 3.0 (2 on the rear, blue)	USB Mouse/Keyboard
	USB Storage (backup)
	CONV.USB-485 (opt.) – COM4

3. LAN/WAN Network Connection

Use LAN1 / LAN2 ports to connect the DigiEye to the network. Up to 2 networks can be connected to the system, with different management modes (backup/load-balance/dual-homing). If you use only 1 network, use the LAN1 port. Network interfaces are of the 10/100/1000 Base-T/Base-TX (self-adaptive) kind. We recommend to use professional network switch and shielded cables CAT-5e (minimum) to achieve optimal network performances.

4. Analog Cameras Connection (mod. DVR/HVR)

In DVR/HVR units, connect the analog cameras through the multi-BNC adapter cables provided, to VIDEO IN ports.

The DigiEye COMPACT unit is not provided with loopthrough BNC video output.

5. Inputs/Outputs connection

The DigiEye COMPACT unit is provided with:

- 4 opto-isolated inputs, dry contacts (potential free) – common GND
- 2 relay Outputs (24VDC/1A), potential free – with maximum load of 1A at 24 Vdc for each output.

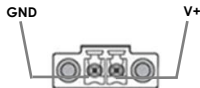
The following chart shows the contacts available on the terminal :

Pin	Description
1	GND
2	IN1
3	IN2
4	IN3
5	IN4
6	OUT1A
7	OUT1B
8	OUT2A
9	OUT2B

6. Power Supply

Connect the power supply to 4 poles Mini-DIN socket on the rear of the unit.

The connector has the following pinout:



Power Supply	
Tension	9 – 30 Vdc (recommended 12Vdc)
Power	60W (max.)

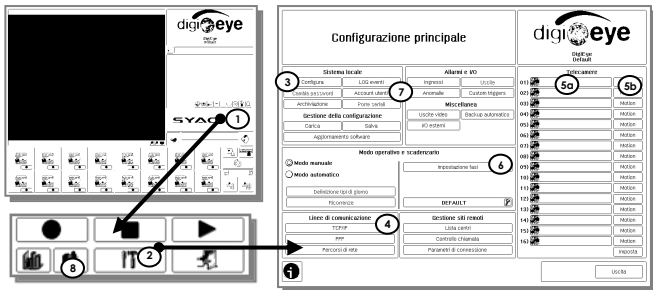
The DigiEye unit is supplied with an AC-DC transformer 12Vdc/5A.

DigiEye COMPACT starts as soon as it receives power.

For all eventualities, DigiEye is protected against reverse polarity of the input voltage.

For EN 50130-4 DigiEye must be connected to a UPS system.

5. Initial Configuration (Legacy interface)

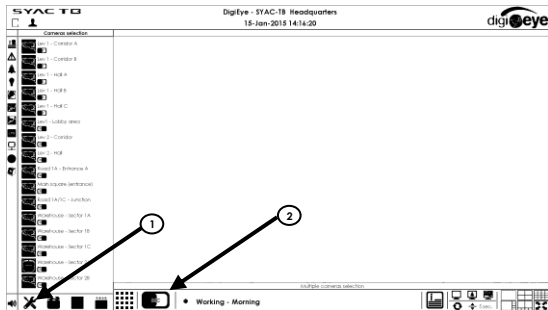


1. Press the button with SYAC-TB logo
2. Press the Configuration button (tools icon)
3. Set local parameters ("Configure" button)
 - a. System name
 - b. Date/time
 - c. Number of analog/IP channels (for hybrid systems)
 - d. Automatic recording reactivation time
4. Network parameters setup ("TCP/IP" button)
 - a. Static or dynamic IP address (DHCP) for LAN1 interfaces and, if necessary, LAN2.

5. For each camera to be connected to the system:
 - a. Press *Camera* button; for analog cameras set *Input Mode* =Color/BN, for IP cameras select *Enable* and set *Model* and *IP Address* (or perform an automatic search pressing the button *Defect*), followed by the button *Probe/Connect* to establish video connection.
 - b. To set up recording on motion detection press the button *Motion* of each camera, define the detection area using the drawing tools and set alarm thresholds.
6. To configure the cameras to record press the *Phase settings* button and activate the base recording (column with red dot) or the alarm recording (column with green bell) for each camera in the "Recording Settings" section. To enable the operation of the secondary monitor, select the corresponding check.
7. To enable the user management press "User Accounts", enter user name and password with supervisor rights (AC) defined on the system. Factory defaults are User = *SUPER* and Password = *SUPER*. Enable the option *Access Control* enabled. To reset the password select the user's row, press the *Modify* button and change the password field.
8. To enable recording, exit the configuration screen and, in the main screen, press the record button (red dot). While recording the cameras will be indicated in pink (base recording) and in red color (alarm/motion recording).

6. Initial Configuration

(Full-HD interface – from s/w 6.0)



1. Press the Configuration button (tools icon) and refer to the former section.
2. At the end of system configuration press the REC button to start Video Recording.

1. Reset to factory configuration

In case you want to reset the system configuration to the factory defaults, proceed as follows:

1. Turn off the DigiEye system and connect a USB mouse and a monitor to the VGA or HDMI port.
2. Turn on the system and during the initial loading (boot) hold both the left and right mouse buttons **SIMULTANEOUSLY**, moving the mouse at the same time.
3. At the prompt for User / Password : enter username and password with Supervisor rights (AC) defined on the system. Factory defaults are User = *SUPER* and Password = *SUPER*. In case of User/Password loss, please contact SYAC-TB technical support.
4. To completely reset the configuration press the following key sequence:
 - a. *Reinitialize configuration*
 - b. *Reinitialize TCP/IP settings*
 - c. *Delete sequences*
 - d. *Exit*
5. Wait until system reboots.

1. Technical Support

The instructions in this document are a simplified base example.

For a detailed description of the DigiEye system and a complete guide to its configuration we recommend to read the user manual, available in digital format on the supplied CD.

The latest version of the manual can also be downloaded from the restricted area of SYAC-TB site (requires registration)

www.syac-tb.com

To contact SYAC-TB technical support:

E-mail : **support.syac@techboard.it**

Phone: +39-059-289899

English

Correct Disposal of this Product (electrical and electronic waste)



This marking shown on the product or its literature, indicates that it should not be disposed with other household wastes at the end of its working life.

To prevent possible harm to the environment or human health from uncontrolled waste disposal, please separate this from other types of wastes and recycle it responsibly to promote the sustainable reuse of business users should contact their supplier and check the terms and conditions of the purchase contract. This product should not be mixed with other commercial wastes for disposal.